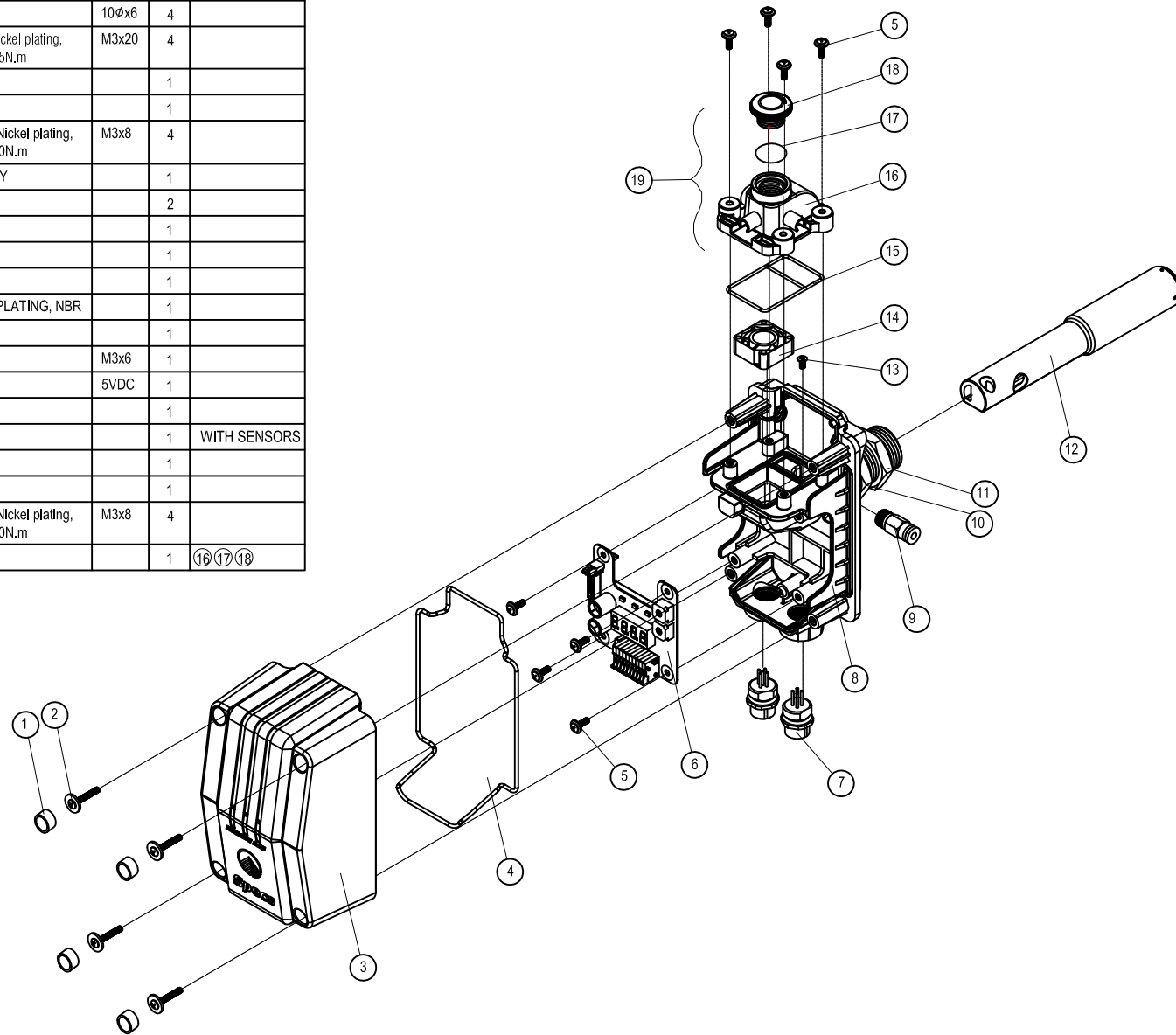


NO.	PART NO.	EQUIPMENT	MATERIAL	SPEC.	Q'ty	REMARK
①	MB-10101	BOLT STOPPER	SILICON	10φx6	4	
②	MA-04070	FRONT COVER BOLT	SWRCH10A, Nickel plating, Torque 1.3~1.5N.m	M3x20	4	
③	NA-06001	FRONT COVER	PPA-GF30FR		1	
④	RS-02001	FRONT COVER O-RING	VITON		1	
⑤	MA-04061	PCB MOUNTING BOLT	SWRCH10A, Nickel plating, Torque 0.8~1.0N.m	M3x8	4	
⑥	SP-06001	OMD P.C.BOARD	GLASS EPOXY		1	
⑦	MC-06004	CABLE CONNECTOR(SOCKET)	BRASS		2	
⑧	NA-06002	MAIN FRAME	PPA-GF30FR		1	
⑨	CV-01001	MIST TEST CHECK VALVE	STEEL		1	
⑩	MB-10102	LOCK NUT	C3604		1	
⑪	MB-10103	SEAL WASHER	STEEL ZINC PLATING, NBR		1	
⑫	NA-06003	MIST INLET TUBE	PPA-GF30FR		1	
⑬	MA-03019	MIST INLET TUBE HOLDING BOLT	SUS 304	M3x6	1	
⑭	SF-02002	SUCTION FAN	PBT-GF30FR	5VDC	1	
⑮	RS-02002	SENSOR UNIT O-RING	VITON		1	
⑯	NA-06004	SENSOR CHAMBER	PPA-GF30FR		1	WITH SENSORS
⑰	RS-02003	SENSOR UNIT CAP O-RING	VITON		1	
⑱	NS-06006	SENSOR UNIT CAP	PPA-GF30FR		1	
⑤	MA-04061	SENSOR UNIT BOLT	SWRCH10A, Nickel plating, Torque 0.8~1.0N.m	M3x8	4	
⑲	SA-02001	SENSOR UNIT			1	⑰⑱⑲



ISSUE	DESCRIPTION	APPD.	DATE



This drawing contains proprietary information of Specs Corporation. By accepting this drawing the recipient agrees that this drawing will not be used, reproduced in whole or in part, or its contents revealed to others, except to meet the purposes for which it was delivered.

Component of Detector

DRAWN	ENG. CHECK	APPROVED	DATE
W H K	C S M	K H L	22/03/2016
DRAWING NO.			REV.
PJMEOMD-STD-U0			0